



## Thermatech™

BlueScope Steel is proud to launch the next generation of COLORBOND® steel, incorporating Thermatech™ technology.

Developed in Australia by BlueScope Steel in conjunction with our suppliers, Thermatech™ technology provides a new level of thermal protection for houses & commercial buildings constructed in Australia's harsh conditions.

This leading edge technology works by absorbing less heat and therefore transferring less heat in the roof space. This provides greater thermal comfort in buildings specified with COLORBOND® steel.

### How does it work?

By absorbing less heat from the sun it has a lower surface temperature as illustrated below:

### Woodland Grey® Comparison Laboratory Next Generation COLORBOND® steel Readings in Degrees Celsius



### Woodland Grey® Outdoors Winter Next Generation COLORBOND® steel Readings in Degrees Celsius



#### Forde Display Home Now Open

**Opening Hours**  
Saturday and Sunday 11am to 5pm

**15 Francis Forde Boulevard,  
Forde**

A member of our Sales and Marketing team will be in attendance at the display home and are available, by appointment only, to discuss your building requirements with you.

---

**Visit our upgraded  
portfolio page on  
our website**

[Portfolio](#)



---

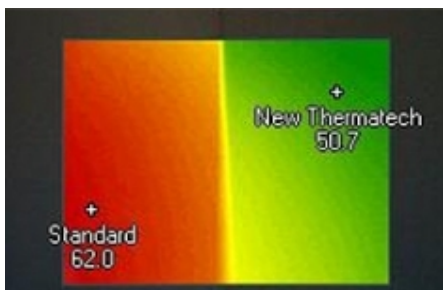
#### Today's Homes Staff

**Brendan McCoullough**  
Chief Operations Manager  
0413 616 514  
[brendan@todayshomes.com.au](mailto:brendan@todayshomes.com.au)

**Peter McCoullough**  
Sales and Marketing  
0413 837 966  
[peter@todayshomes.com.au](mailto:peter@todayshomes.com.au)

**Emma Wheaton**  
Administration Sales and Marketing  
0409 616 714  
[emma@todayshomes.com.au](mailto:emma@todayshomes.com.au)

**Michael Hogan**  
Construction Manager  
0411 870 175  
[michael.hogan@todayshomes.com.au](mailto:michael.hogan@todayshomes.com.au)



## What are the advantages of COLORBOND® steel incorporating Thermatech™ technology?

- When used in roofing applications, it improves the thermal performance of COLORBOND® steel across the entire colour range.
- Average reduction of solar absorptance across all colours is 5%
- Greatest improvement from reduced solar absorptance is in the dark colour range.
- Under BASIX colour classification – Sandbank® & Dune® move from a "medium" colour to a "light" despite no change to the actual colour.
- Similarly Wilderness®, Manor Red® & Jasper® move from a "dark" to a "medium" classification.
- In some parts of Australia this means real savings in the amount of insulation that is required to meet building regulations, eg under deemed-to-satisfy rules
  - medium to light under BASIX = reflective foil at roof is not required.
  - light colours under BCA = drop of R0.5 for roof insulation.
  - very light colours under BCA = drop of up to R1.0 for roof insulation.

---

Visit the Colourbond website today to find out more information about their products and services.

[www.colourbond.com](http://www.colourbond.com)

Why don't you also check out Colourbonds new range of thermal efficient colours at the Colourbond Colour Centre

[www.colourbondcolours.com](http://www.colourbondcolours.com)

**Daniel Morrison**  
Estimator/Construction Manager  
0407 942 862  
[daniel@todayshomes.com.au](mailto:daniel@todayshomes.com.au)

**Jan Corrigan**  
Accounts  
02 6228 3232  
[jan.corrigan@todayshomes.com.au](mailto:jan.corrigan@todayshomes.com.au)

**Heidi McCoullough**  
Website / Marketing  
0407 613 533  
[heidi@todayshomes.com.au](mailto:heidi@todayshomes.com.au)

**Kevin Hogan**  
Site Safety & Liaison Officer  
0438 450 415

**Tony Sturzacker**  
Bobcat & Truck - Available for Hire  
0408 419 573

Fax: 02 6280 8108

---

### Office Address

Suite 1 & 3, HIA Home Ideas  
28 Collie Street  
FYSHWICK ACT 2609

### Postal Address

PO BOX 302  
FYSHWICK ACT 2609

### Contact Numbers

02 6228 3233 Ph  
02 6280 8108 Fx

[todayshomes.com.au](http://todayshomes.com.au)

Licensed Builder

ACT 200313229 NSW  
139836C

## See Our Colours

### Standard Range

COLORBOND® steel offers a modern range of 20 designer colours for Roofing, Walling, Guttering, Downpipes and Fascia as part of the standard range.

### Ultra Range

The COLORBOND® Ultra steel range for Roofing, Walling, Gutters, Downpipes and Fascia is especially designed for coastal and industrial environments.

### Stainless Range

The COLORBOND® Stainless steel range for Roofing and Walling is especially designed for severe environments.

### Fencing Range

COLORBOND® steel offers a modern range of 14 designer colours for Fencing.



---

#### **Disclaimer**

*This e-mail and any attachments to it (the "Communication") is confidential and is for the use only of the intended recipients. The Communication may contain copyright material of Today's Homes & Lifestyle Pty Ltd ("THL"), or any of its related entities or third parties. If you are not the intended recipient of the Communication, please notify the sender immediately by return e-mail, delete the Communication, and do not read, copy, print, retransmit, store or act in reliance on the Communication. Any views expressed in the Communication are those of the individual sender only, unless expressly stated to be those of THL. THL does not guarantee the integrity of the Communication, or that it is free from errors, viruses or interference.*

*THL will not be liable to you or anyone else for any decisions made or action taken in relying on the information in this newsletter. Links to third party sites are provided as a convenience to our users. THL does not control and makes no warranty in relation to any of these sites or their content.*

#### **Copyright**

Text and images are courtesy of **Blue Scope Steel Pty Ltd**  
[www.bluescopesteel.com](http://www.bluescopesteel.com)

